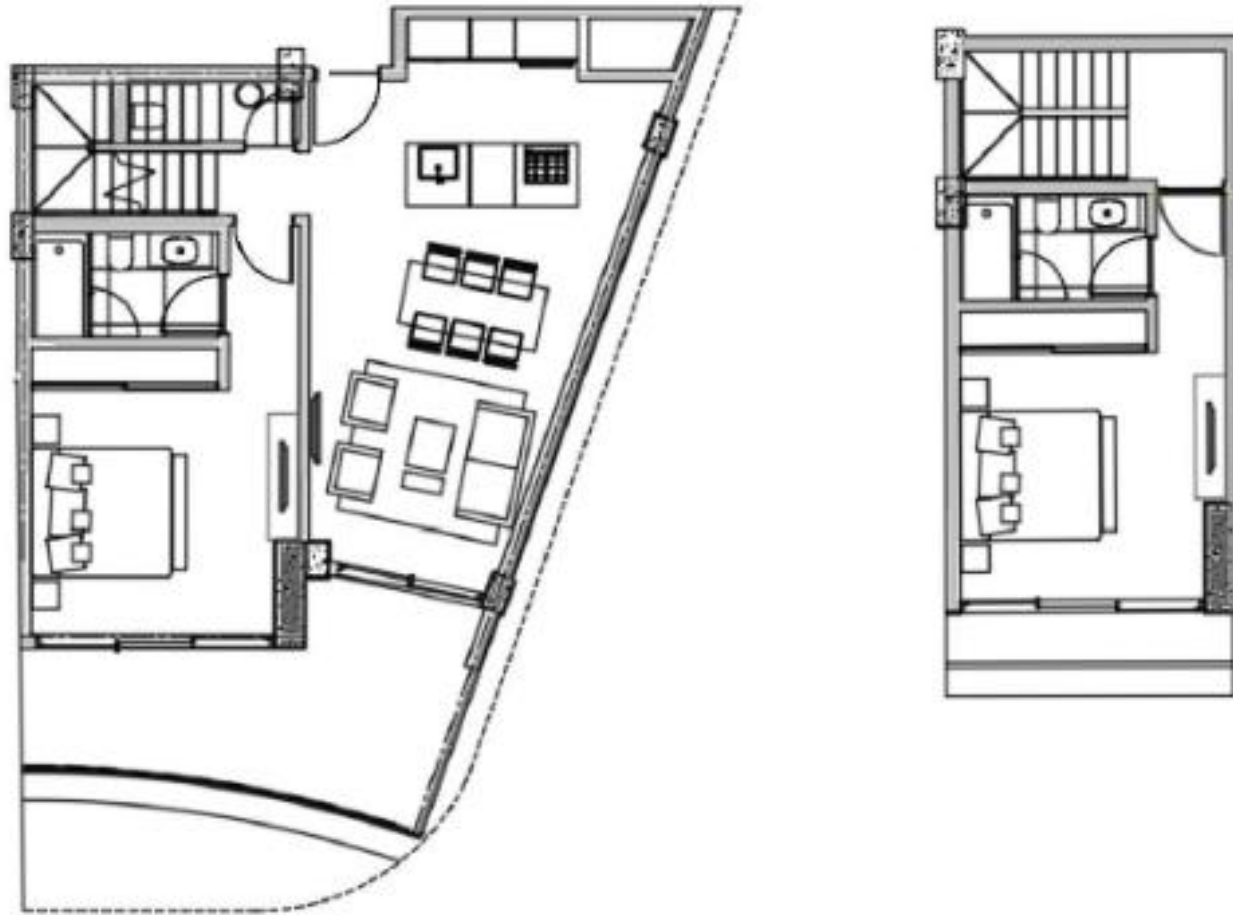

**EXCLUSIVE COLLECTION OF TWO-STOREY
PENTHOUSE UNITS WITH SPECIAL PRICING
ONLY FOR OUR CLIENTS**

**UF-98 unit is 108m2 (1162sq.ft.)
Price - \$367,200**



CAP CANA REEF & GOLF

NIVELES 5 Y 6

TIPOLOGÍA R4

UF 98

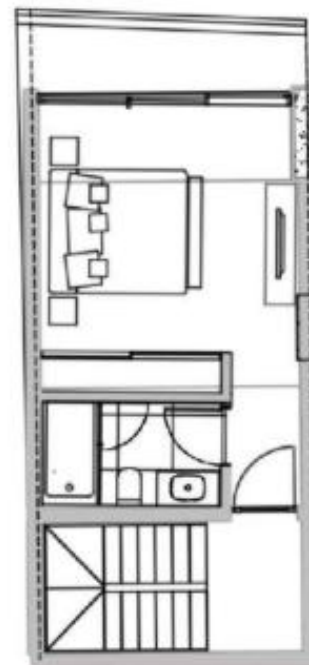
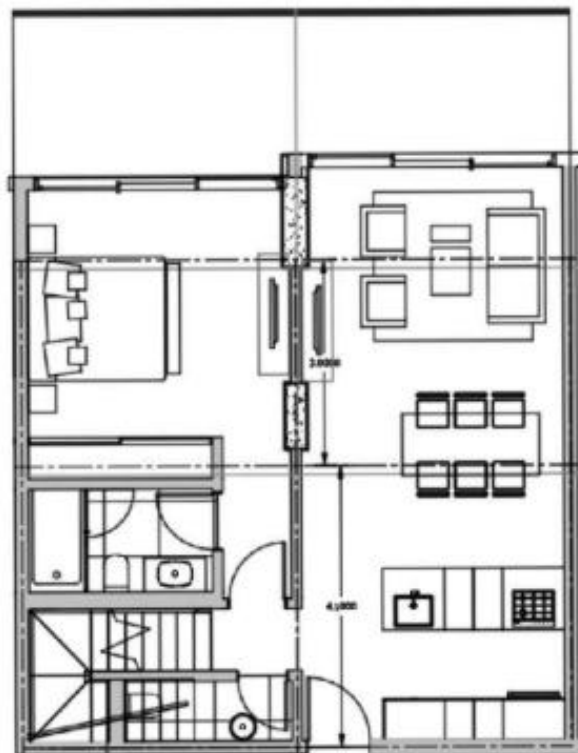
Propuesta de Renodelación Interior- Alternativa de
Distribución Interior (No Incluida en Alcance Base)

UF-96 unit is 111m2 (1194sq.ft.)
Price - \$377,400

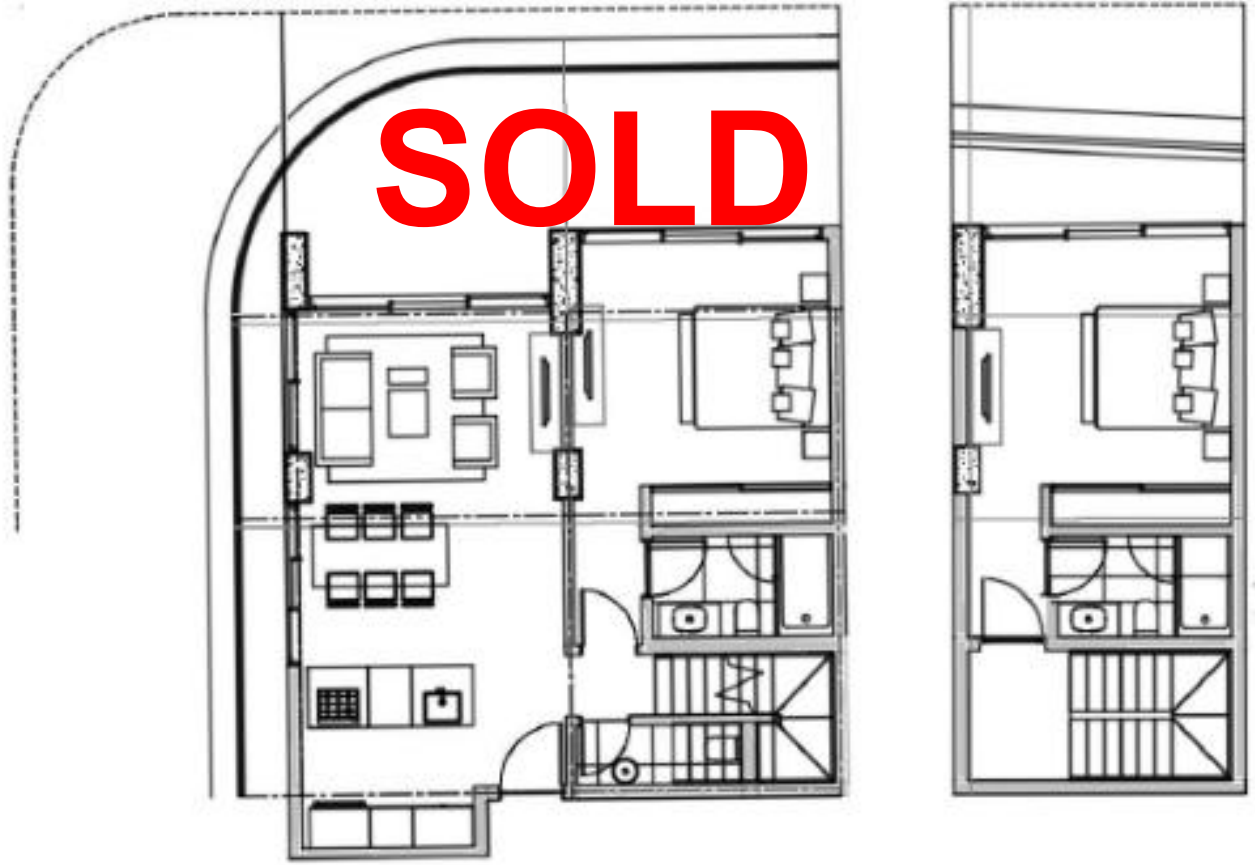


**UF-95 unit is 111m2 (1194sq.ft.)
Price \$377,400**

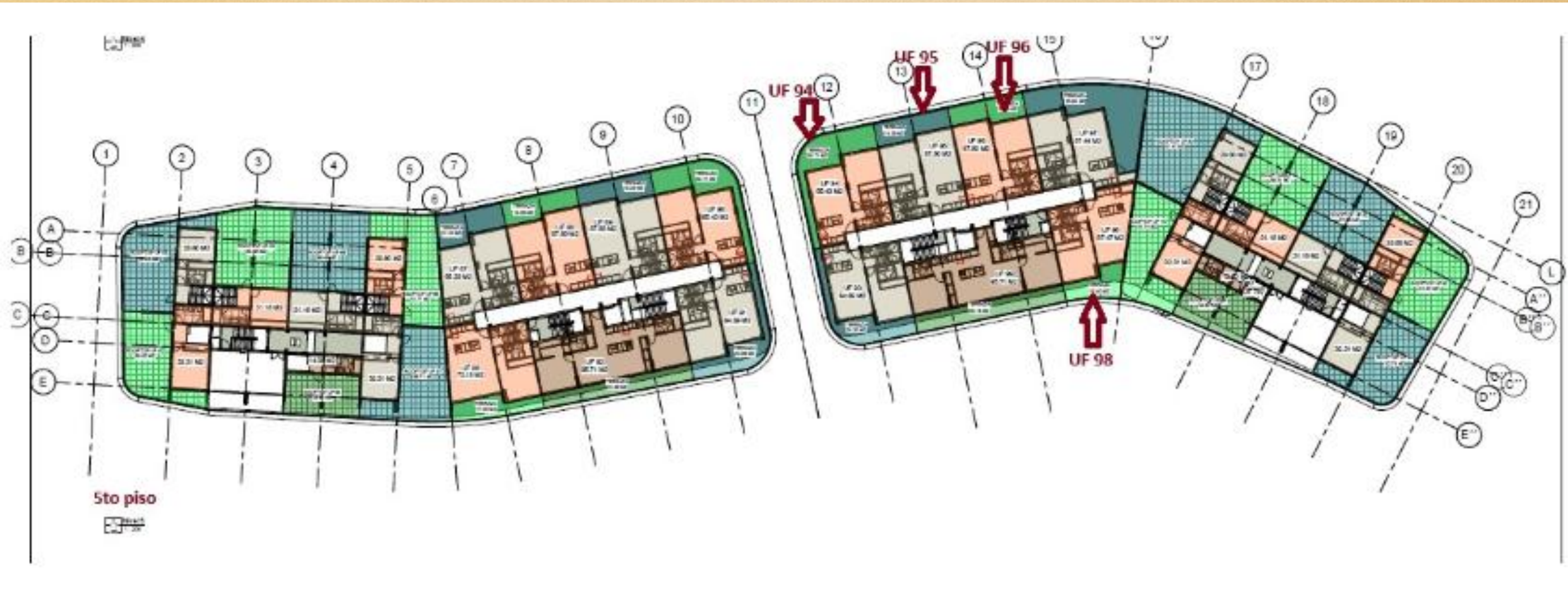
Propuesta de Remodelación Interior- Alternativa de
Distribución Interior (No Incluida en Alcance Base)



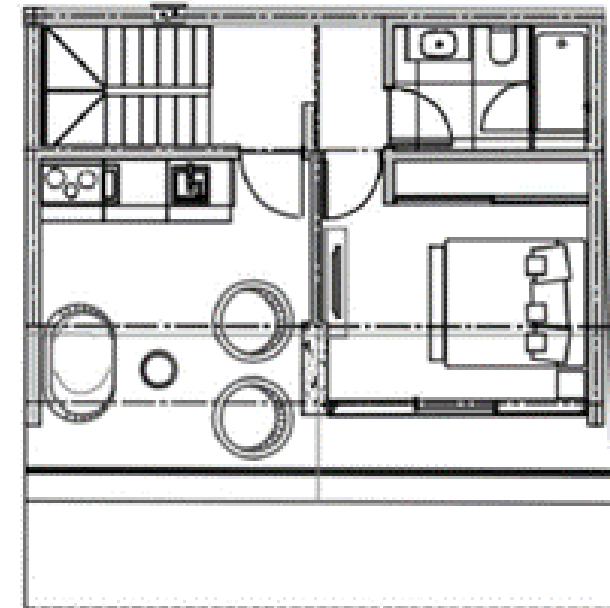
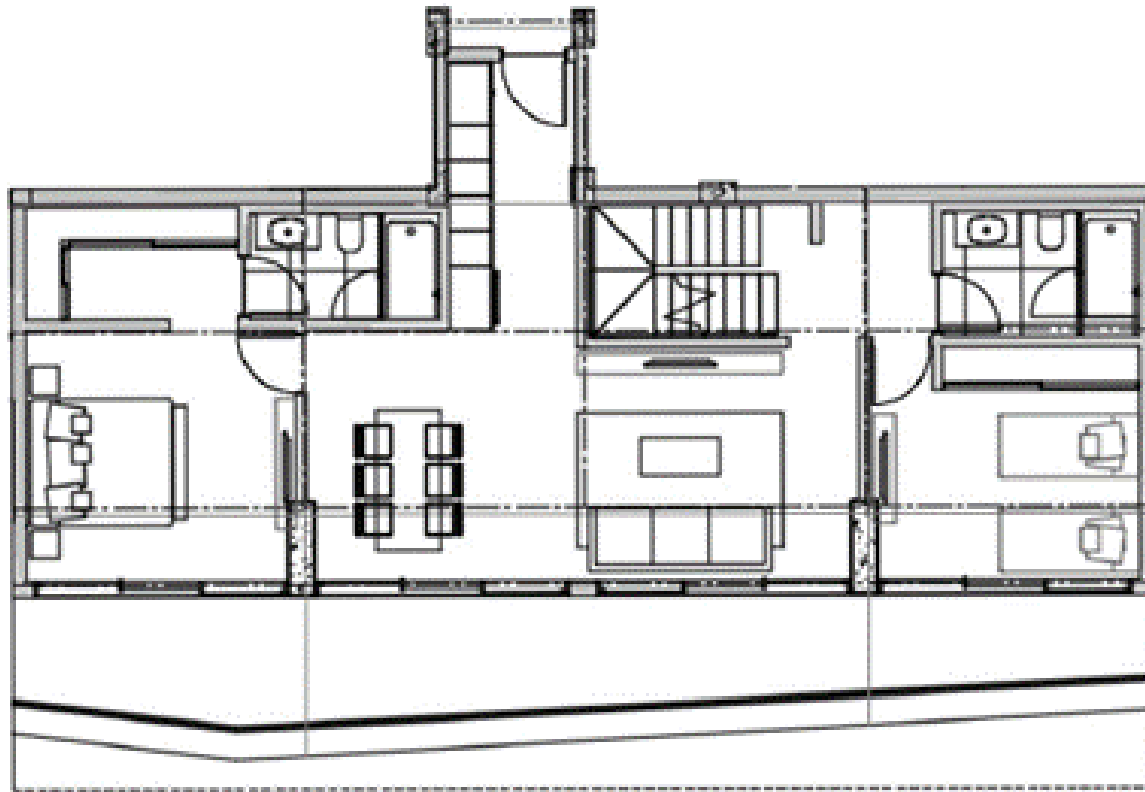
UF-94 unit is 121m2 (1302sq.ft.)



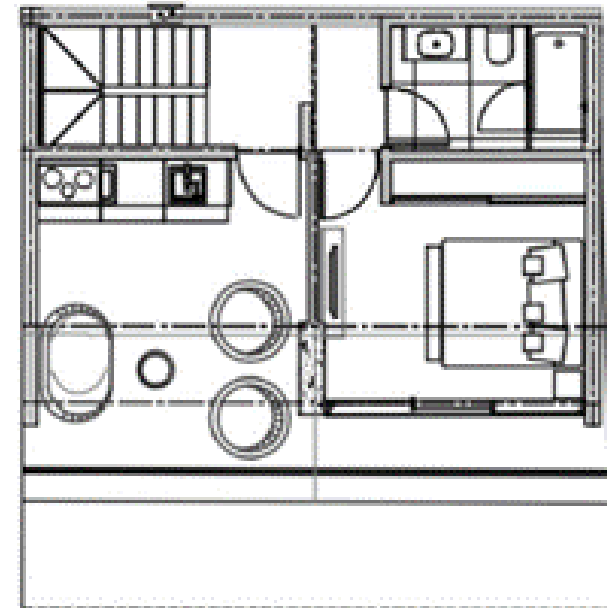
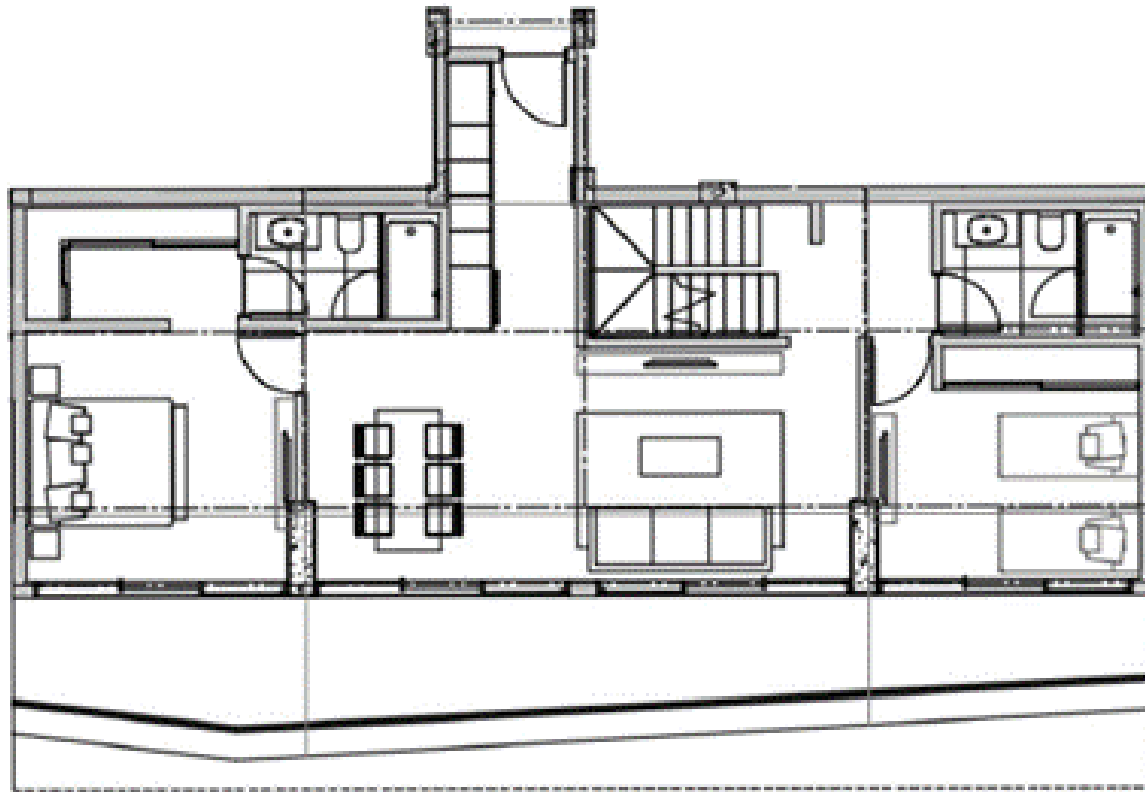
POND -----POND -----POND -----POND ----- POND -----POND -----POND -----



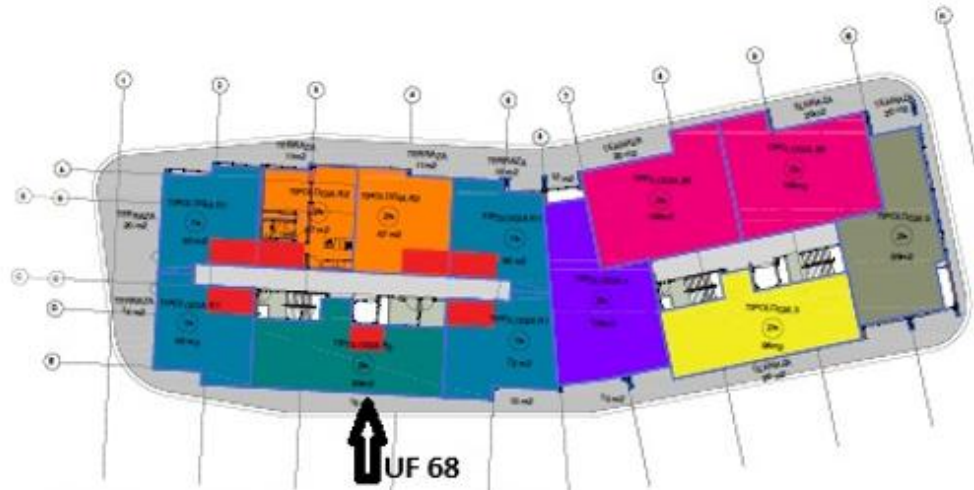
**UF-68 unit is 171m2 (1840sq.ft)
Price - \$581,400**



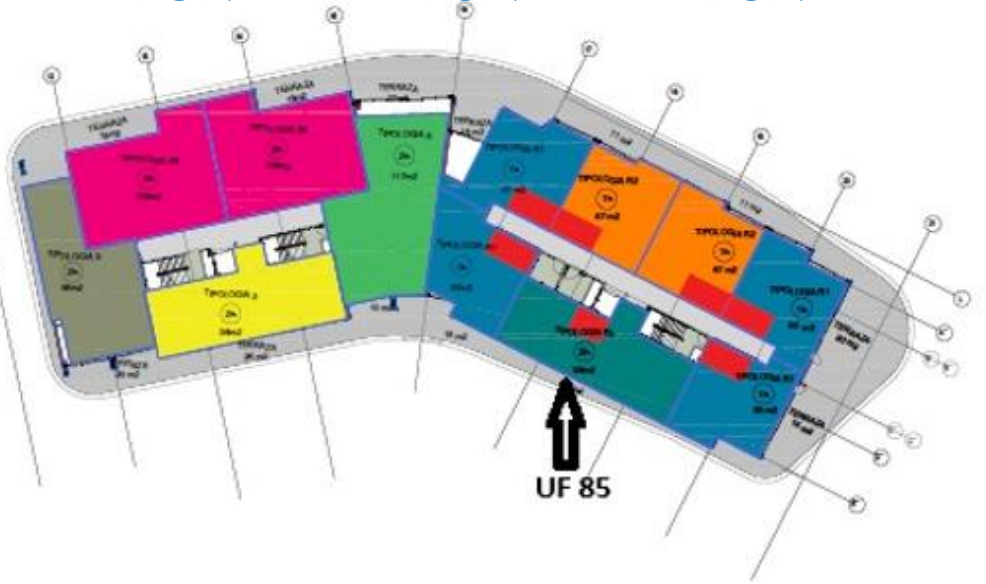
UF-85 unit is 166m² (1786sq.ft.)
Price - \$564,400



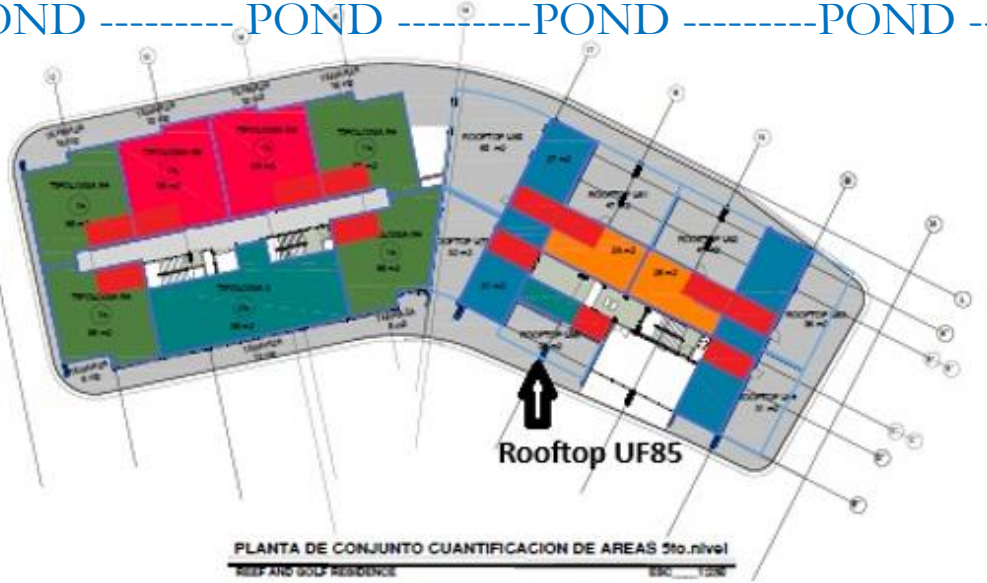
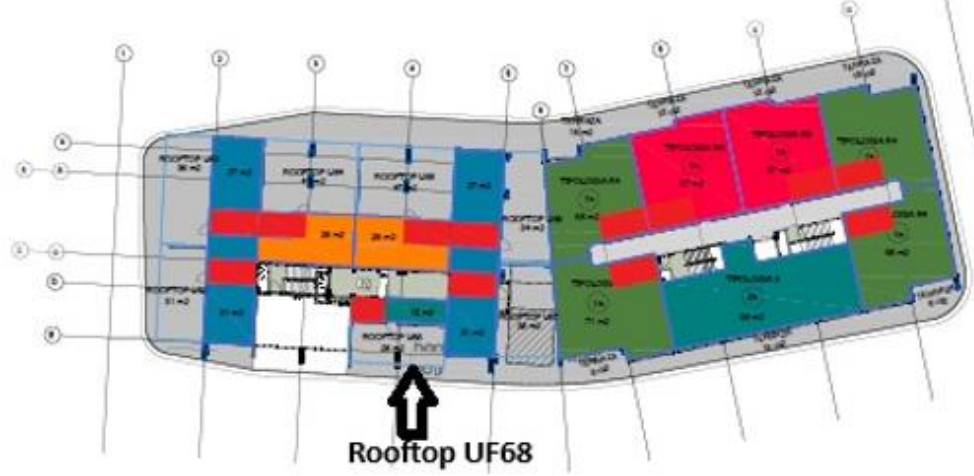
POND -----POND -----POND -----POND ----- POND -----POND -----POND -----
POND -----



PLANTA DE CONJUNTO CUANTIFICACION DE AREAS 4to.nivel
REEF AND GOLF RESIDENCE ESC. 1/200



POND -----POND -----POND -----POND -----POND -----POND -----POND -----
POND -----



PLANTA DE CONJUNTO CUANTIFICACION DE AREAS 5to.nivel
REEF AND GOLF RESIDENCE ESC. 1/200